



# Gilbert Colvin Primary School: Reception

## Welcome Information





# School Vision

We have a strong vision which underpins everything we do:

At Gilbert Colvin Primary School, we believe that all our pupils have the potential to be change makers. We believe that confidence, self-esteem and strong moral values are the keys to successful futures.

We empower every member of the school community to embrace challenge, have a passion for learning, take risks, collaborate, and aspire to achieve their best.

Our pupils thrive in a caring, inclusive environment which provides excellent educational opportunities and memorable experiences to prepare our pupils for a positive future.

- ☐ Welcome and Introductions
- ☐ Reception Organisation
- ☐ Reception Curriculum and Learning Through Play
- ☐ Reception Routines
- ☐ Getting Involved in Your Child's Education
- ☐ Admission and Induction Procedures
- ☐ Questions

# Reception Organisation

- 2 Reception classes with up to 30 children in each class
- 2 adults working in each Reception class

**Morning session – 8:45 a.m.**

Gate opens at 8:45 am.

**Lunchtime**

**Afternoon session – 3:10 p.m.**

## School Uniform



School uniform is available to order online



Price lists and samples are available from the school office



**Please make sure everything is named – this makes it much easier to get it back to the owner**



# Jewellery



Bangles, rings, necklaces or hoop earrings should not be worn in school. Small stud earrings are allowed but **must** be removed on PE days.

# What will my child learn in Reception?



- ✚ **Early Years Foundation Stage is the national curriculum for children aged 5 and under.**
- ✚ **There are 3 Prime areas of learning:**
  - **Communication and Language.**
  - **Physical Development.**
  - **Personal Social and Emotional Development.**
- ✚ **There are 4 Specific areas of learning:**
  - **Literacy**
  - **Mathematics**
  - **Understanding the World**
  - **Expressive Arts and Design**



# Learning in Reception

- ✚ Short direct teaching sessions during the day - Maths, Literacy and Topic
- ✚ Systematic teaching of phonics – 45 min daily – RWI scheme
- ✚ Skills in all areas of learning are developed through a balance of adult led and child initiated activities.
- ✚ Adults observe children's learning during play and use these observations to plan next steps to ensure children are moving forward in their learning
- ✚ We encourage children to be lifelong learners and to be willing to challenge themselves, take risks, to be creative and confident to explore new experiences.



# Pupil Profile: The Learning Journey

Your child's achievements and learning journey will be recorded throughout the year. We do this in several ways:

- ▶ Record photos and annotations using a secure web based program called Tapestry.
- ▶ Contributions from home - special achievements or something which shows how your child is learning. This may include homework.
- ▶ Collecting examples of your child's work e.g. paintings, mark-making, writing

You will be able to access Tapestry and view your child's achievements at school.

# PSED: Personal, Social and Emotional Development

- ✚ Building constructive and respectful relationships
- ✚ Expressing feelings and considering others feelings
- ✚ Show resilience and perseverance
- ✚ Manage own needs and different factors that support overall health and wellbeing.





# Physical Development

## Gross and fine motor skills

- # Developing control and grace in movements
- # Developing overall body strength
- # Developing small motor skills
- # Refining a range of ball skills
- # Developing a handwriting style which is fast and accurate





# Communication and Language

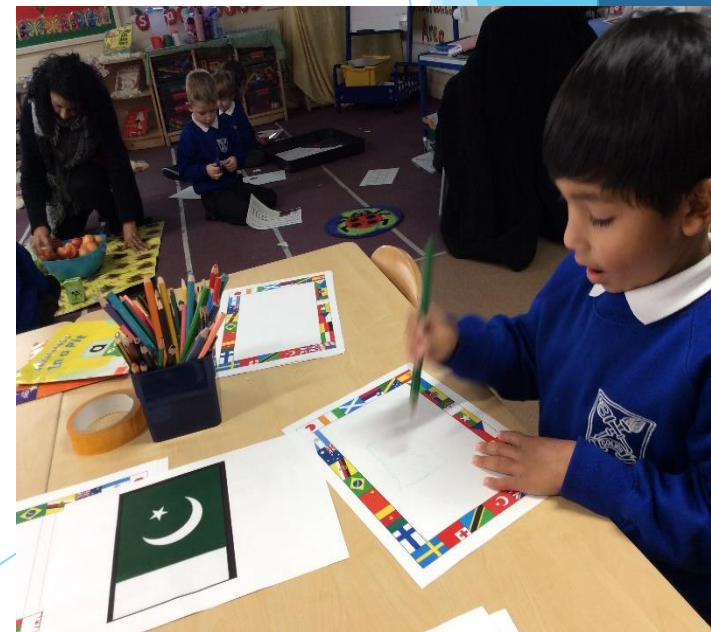
- ✚ Understand how to listen and why listening is important
- ✚ Learn new vocabulary
- ✚ Ask questions
- ✚ Retell stories
- ✚ Learn poems and songs
- ✚ Use talk to work out problems





# Literacy

- ✚ Read individual letters by saying the sounds for them
- ✚ Blend sounds into words so that they can read short words
- ✚ Read a few common exception words
- ✚ Form lower-case and capital letters correctly
- ✚ Write short sentences



Read Write Inc





# Mathematics

- ✚ Automatically recall number bonds for numbers 0-5 and some to 10
- ✚ Explore the composition of numbers to 10
- ✚ Link numbers to amounts
- ✚ Adding and subtracting
- ✚ One more and one less
- ✚ Shape
- ✚ Repeating patterns
- ✚ Compare length, weight and capacity



# Expressive Arts and Design

- ✚ Use a variety of effects to express ideas and feelings
- ✚ Create collaboratively, sharing ideas
- ✚ Pretend play
- ✚ Watch dance, expressing feelings and responses
- ✚ Engaging in singing and dance





# Understanding the World

- ✚ Talk about members of their family
- ✚ Compare and contrast characters from the past
- ✚ Reading maps
- ✚ Recognise that people have different beliefs
- ✚ Recognise differences between this country and other countries.
- ✚ Exploring the natural world
- ✚ Educational visits

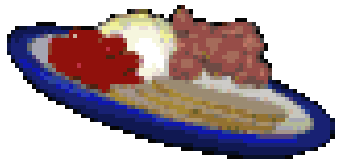


# Reception Routines

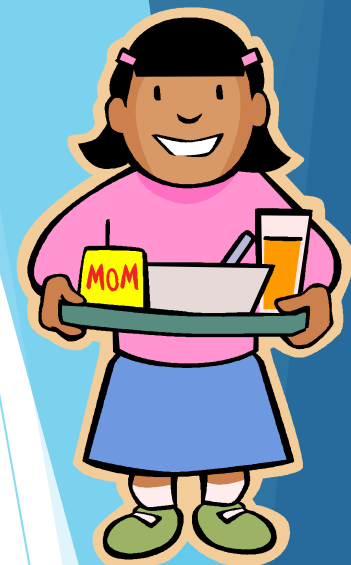
- >Welcome, greeting, self-registration and child initiated activities
- Direct Teaching Time – Whole class and small groups
- Child-Initiated Activities - Indoor and Outdoor- small group work
- Direct Teaching Time – Whole class and small groups
- Lunch
- Direct Teaching Time
- Child-Initiated Activities- small group work
- Story time
- Home time

# Reception Routines

- In addition to our carpet sessions and independent activities, weekly PE lessons
- Milk and a snack are on offer throughout the session
- Toilets available throughout the day in the main corridor
- School book bags should be brought every day- these can be purchased from the office- only school book bags please!



# School Dinners



- ❑ All school dinners are currently free to Reception and Key Stage 1 children
- ❑ Please ensure your child knows how to independently use a knife and fork
- ❑ Meals change weekly. Please see the school website for the menu available each week.
- ❑ Midday staff will be on hand to support children.

# Packed Lunch



Alternatively, your child can have a healthy 'packed lunch' brought in a lunch box with their name and class clearly written.

A healthy lunchbox includes:

- ❖ sandwiches/rice/pasta
- ❖ fruit/vegetables
- ❖ yoghurt
- ❖ water or milk to drink
- **No nuts/chocolate/sweets/crisps/fizzy drinks/juice**





# What can I do to support my child's education?

As a parent, you are your child's first teacher. The support and encouragement you provide are extremely important throughout your child's school life but particularly in the Early Years.

- ☐ Ensure your child attends regularly
- ☐ Ensure your child arrives on time and is collected on time
- ☐ Talk to a member of staff if you have any worries/concerns
- ☐ Download the School Ping App and check regularly for information
- ☐ Name writing at home? Remember not to use capitals: Ryan not RYAN.

- Attend Parent/Teacher meetings and curriculum workshops each term (phonics, maths, writing, reading)
- Support your child's learning by following up work being carried out in school – homework goes on the school website fortnightly
- Look at the school website regularly for information and photos on children's learning
- Let staff know how you feel your child is getting on
- Respond to school consultations and questionnaires that are sent out
- Come in and help out in the classroom or on trips/visits. You will be informed when help is needed
- Amazing learning at home? Please upload to Tapestry learning journals



**SchoolPing**





# A Child's Absence



- Please inform us of your child's absence on the first day of absence.
- Office hours are Monday – Friday, 8:15 a.m. to 4:15 p.m.
- Please inform us immediately if you change your contact telephone number
- Phone on 020 8550 4630



us at [admin.gilbertcolvin@redbridge.gov.uk](mailto:admin.gilbertcolvin@redbridge.gov.uk)

# Collection at the end of the day

- ▶ Please collect children from the Reception gate at 3.10 pm. Entry is through the gate on Dacre Avenue.
- ▶ If someone different is collecting your child, please make staff aware. If we do not know the adult collecting, we will not let your child go home with them.
- ▶ Let staff know in the morning or call the office during the day.



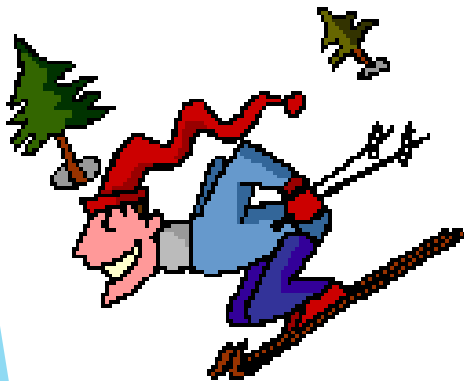
# Holidays



Please do not book holidays in school time.



It will be marked unauthorised and possibly be a fine.



# Stay and Play!


Wednesday 10<sup>th</sup> July

4-5pm

This session is for children and parents new to Gilbert Colvin School. Come along for a chance to meet your new teacher and make some new friends.



# Induction Arrangements 2024

 Wednesday 4th, Thursday 5<sup>th</sup> and Friday 6<sup>th</sup> of September

Children will attend morning sessions – 8.45 – 12.45 am

Children will stay for lunch.

Admission meeting visits to Gilbert Colvin Reception for all families in the afternoons of this week. Please make sure your child attends the visit. You will have an opportunity to visit the classroom, meet the teacher and ask any questions you may have.

 From Monday 8<sup>th</sup> September all children will attend full time:

8.45 a.m. – 3.10 p.m.

**Please use the Dacre Avenue entrance to collect and drop off each day.**



We look forward to seeing you and your child in our  
Reception classes here at  
Gilbert Colvin Primary  
School

